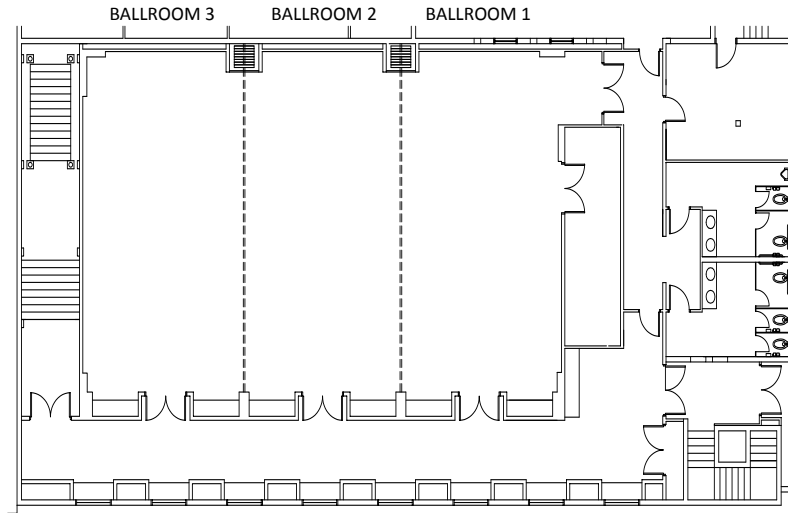


Divi Alhambra  
 Floor Plans & Capacity Charts For Ballroom



ROOM	SQ. FEET	CEILING HEIGHT	CLASSROOM TABLES 3 PER 6'	THEATRE	U-SHAPE	RECEPTION STANDING	ROUNDS	ROUNDS WITH DANCE FLOOR
Ballroom	3240	13' 9"	72	225		225	180	150
Ballroom 1	1080	13' 9"	24	75	25	75	60	40
Ballroom 2	1080	13' 9"	24	75	25	75	60	40
Ballroom 3	1080	13' 9"	24	75	25	75	60	40
Ballroom 1&2 or 2&3	2160	13' 9"	48	150	40	150	120	90